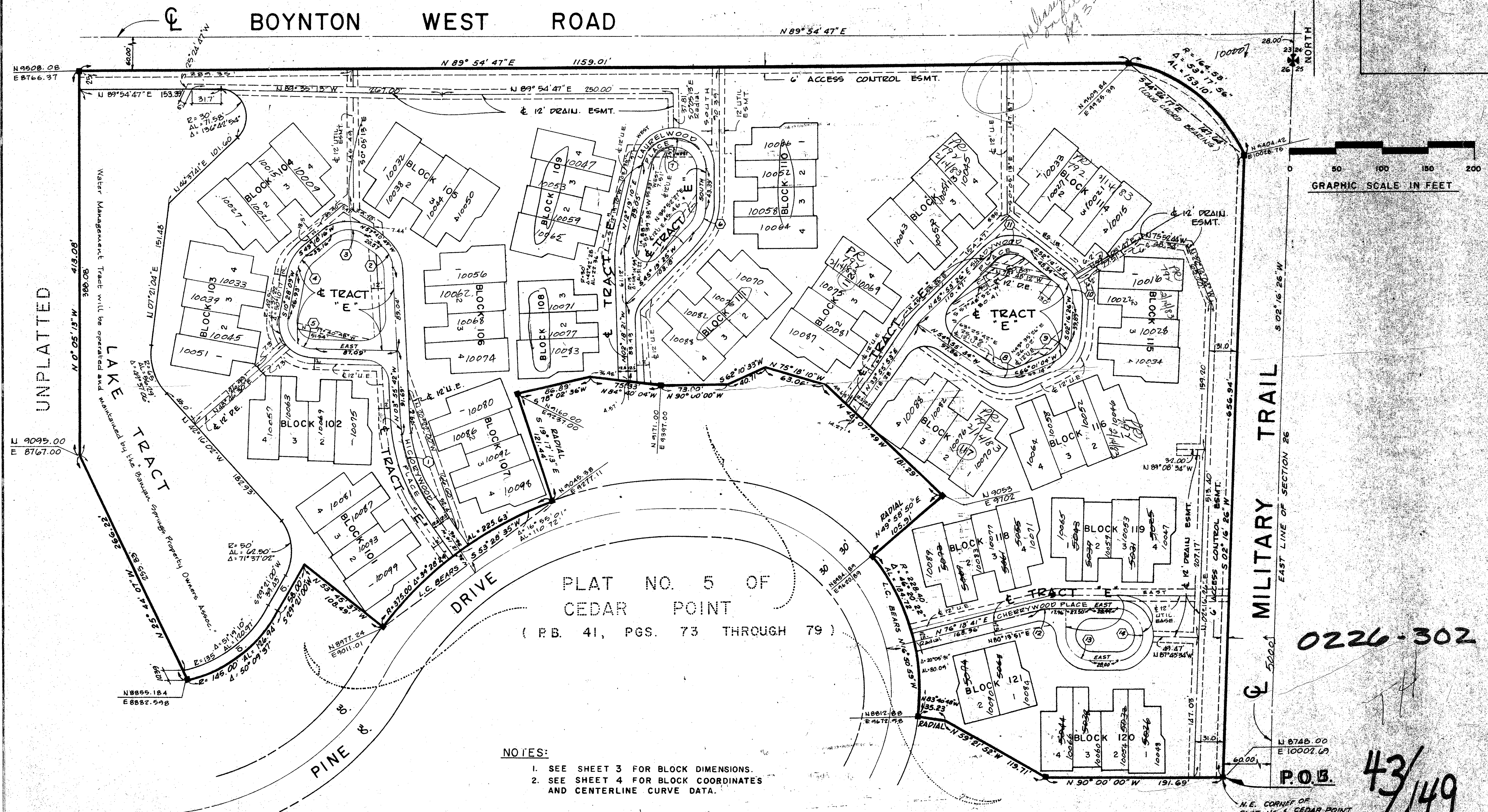


43/149

149

A PLANNED UNIT DEVELOPMENT IN COUNTRY CLUB TRAIL
PLAT NO. 6, CEDAR POINT
 IN THE NORTHEAST QUARTER (N.E. 1/4) OF SECTION 26, TWP. 45 SO., RGE. 42 EAST
 PALM BEACH COUNTY, FLORIDA
 BEING A REPLAT OF A PORTION OF THE SUBDIVISION OF SECTION 26 (P.B. 6, PG. 26)
 SHEET 2 OF 4



UNPLATTED

GRAPHIC SCALE IN FEET

PLAT NO. 5 OF
 CEDAR POINT
 (P.B. 41, PGS. 73 THROUGH 79)

- NOTES:
1. SEE SHEET 3 FOR BLOCK DIMENSIONS.
 2. SEE SHEET 4 FOR BLOCK COORDINATES AND CENTERLINE CURVE DATA.

0226-302

43/149

Field Book No. Pg.	ROBERT E. OWEN & ASSOCIATES, INC. ENGINEERS - PLANNERS - SURVEYORS WEST PALM BEACH FLORIDA	PLAT NO. 6 CEDAR POINT	Job No. 81-028
Design			Scale 1" = 50'
Drawn A. Field			Date March, 1981
Checked P.T. Krick			Sheet 2 of 4
			File No. BF-2314-B